

City of TSUKUBA



CONTENTS

- 04-07 SCIENCE AND TECHNOLOGY
- 08 EDUCATION
- 09 DIVERSITY
- 10-11 NATURE
- 12-13 EVENT
- 14 LOCAL SPECIALITIES
- 15 ACCESS

INTRODUCTION

Located approximately 50 km northeast of Tokyo, Tsukuba City offers easy access to Tokyo and Narita International Airport, both of which are 45 minutes away by train (Tsukuba Express) or by car respectively. The northern part of the City is home to Mt. Tsukuba, known as one of the 100 most famous mountains in Japan and often referred to as "Fuji in the west,

Tsukuba in the east". In addition, the City is blessed with rich natural environment, thanks to its proximity to Lake

Kasumigaura, the second largest lake in Japan. The climate is relatively mild throughout the year, and the City has abundant farm products such as rice, wheat and blueberries. Furthermore, we are proud to be the country's number one producer of turf grass.

The part of the City designated as Science City was constructed as a part of the national government's project to create a focal point for high-level research and education, as well as to encourage people to move out of overcrowded areas of Tokyo. Since 1970, new residential areas and research and education facilities have been built. Today, there are about 150 public and private research institutions and R&D companies located in the City of Tsukuba.

Furthermore, as of January 1, 2023, Tsukuba City became the city with the highest population growth rate in Japan for the year (2.30%). We invite you to come and experience the vibrant Tsukuba City where rich nature and science and technology coexist.

A spectacular view from the top of Mt. Tsukuba

Front cover: Tsukuba Central Park in early summer

Back cover: Gakuen-no-mori Park in full bloom with cherry blossoms

SCIENCE & TECHNOLOGY

Welcome to Tsukuba, the city of science and technology and home to more than 150 research institutions and universities.



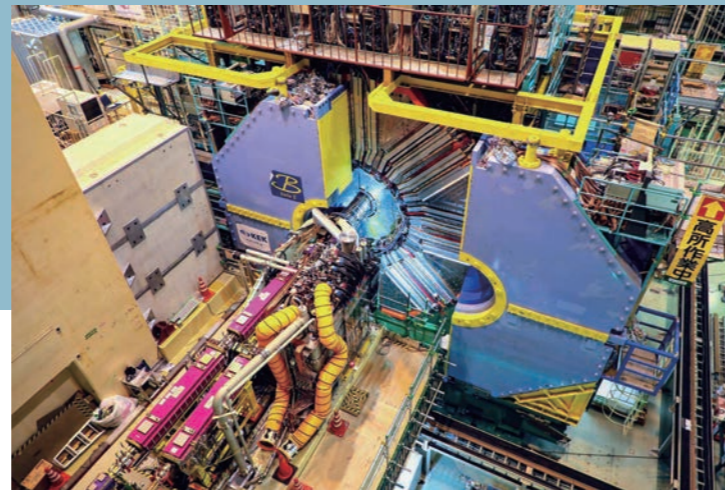
Tsukuba Space Center of the Japan Aerospace Exploration Agency (JAXA)



About 2,500 foreign students study at the University of Tsukuba.



One of the world's largest planetariums at the Tsukuba Expo Center



The Belle II experiment by the High Energy Accelerator Research Organization(KEK)

©KEK



National Institute of Advanced Industrial Science and Technology (AIST) Geological Museum has more than 150,000 registered specimens, such as rocks, minerals and fossils.

SCIENCE & TECHNOLOGY

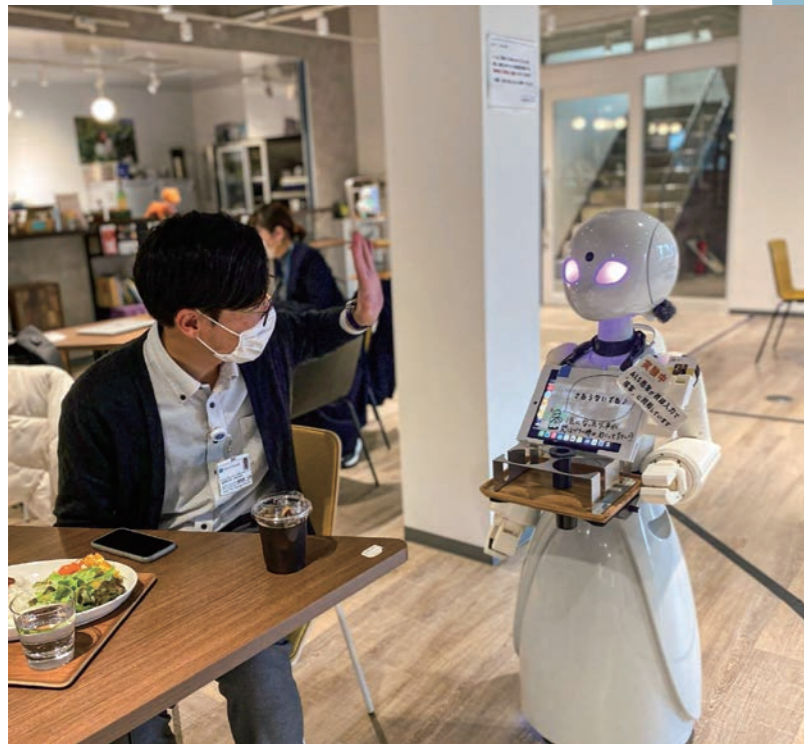
Tsukuba City has been designated as a "Super City-type National Strategic Special Zone" in 2022. The city is striving to create an inclusive and sustainable society with its citizens through the implementation of innovative technology.



Tsukuba Startup Park is a municipal incubation institution which supports each stage of starting business.



A gathering place for citizens named "co-en" with a co-working space, gallery and café, where various collaborations and challenges are created



Demonstrating customer service using the OriHime® robot operated by OryLab Inc.



Open experiments for autonomous navigation of mobility robots in the city



Robot delivery service operated by Rakuten Group, Inc.



Hybrid Assistive Limb (HAL), the world's first Wearable Cyborg, developed by CYBERDYNE Inc., a startup company founded by Professor Sankai from the University of Tsukuba ©CYBERDYNE

EDUCATION

Superior educational environment for fostering future generation.



Interactive education with researchers in primary schools



Tsukuba International School (TIS) is an IB World School in Tsukuba. It offers a rich educational experience for students from pre-kindergarten (age 3) to Grade 12 (age 18).



International students at the University of Tsukuba give lectures in primary schools about their home countries.



International students at the University of Tsukuba gather for the meeting of the city's Multilingual Newsletter.



Japanese language classes offered by the Tsukuba International Association

DIVERSITY

About 12,000 people from nearly 150 countries live in Tsukuba. Not only administrative, but also universities, international associations, and various local institutions strive to make the city with diverse.



Various intercultural events are held in Tsukuba Center Square near Tsukuba Station.



The Japanese Culture Week is held for international students at the University of Tsukuba.

NATURE

Tsukuba is blessed with rich natural environment. Especially Mt. Tsukuba, the symbol of Tsukuba, and its vicinities offer a wide range of activities and seasonal beauty.



FOREST ADVENTURE TSUKUBA is a nature experience-type outdoor park that makes use of the forest terrain and trees as they are, and has created courses between trees using wires and logs.



Mt. Tsukuba Plum Festival takes place at the plum garden on the hillside of Mt. Tsukuba. With an area of approx. 4.5 hectares (250m above sea level), about 1,000 red and white plum trees are planted in the garden.



Mt. Tsukuba over a rice field in early summer



Mt. Tsukuba in fall



Mt. Tsukuba Shrine



Mt. Tsukuba in winter



Tsukuba Kasumiguara Ring Ring Road is a 180km cycling course and designated as a national route in November 2019.

EVENT

The city is full of multicultural atmosphere, with a variety of events take place throughout the year.



Matsuri Tsukuba is the biggest festival of the city. As well as absolutely powerful and huge parade featuring Mikoshi (portable shrine), Hayashi (musical accompaniment) and Nebuta (huge lantern arts), it includes plenty of other enjoyable attractions as street performances, stage shows, and various food and drink stalls.



Tsukuba Festival is an international exchange event which appeals the charm of the international city Tsukuba. It provides an opportunity for citizens living in and out of Tsukuba to interact with various cultures of the world.



Mt. Tsukuba has a famous anecdote about frogs, and there is an event where adults and children alike wear frog headgear and run along the front path of Mt. Tsukuba Shrine.



Tsukuba Marathon Race is held in November and more than 15,000 participants run through the autumn colors.



The Ninth Symphony Concert, held annually at the end of the year in a music hall in the city center, features a large choir of volunteer citizens performing with a professional orchestra and soloists.

LOCAL SPECIALITIES

Tsukuba City is rich in agricultural products such as rice and blueberries and offers a variety of specialities that make the most of local produce.



Many restaurants offer dishes using a wealth of local ingredients.



Blueberries are widely grown in Tsukuba and you can enjoy harvesting them in many farms.



At Tsukuba Winery, located at the foot of Mt. Tsukuba, fertile soil and a great climate grow rich grapes.



Recently, local beer breweries are fascinating drinkers.



Blessed with rice and pure water, there is a long history of the sake brewing culture since Edo period.



It is known that there are a number of ramen restaurants in Tsukuba City, competing with each other.

Access to Tsukuba City



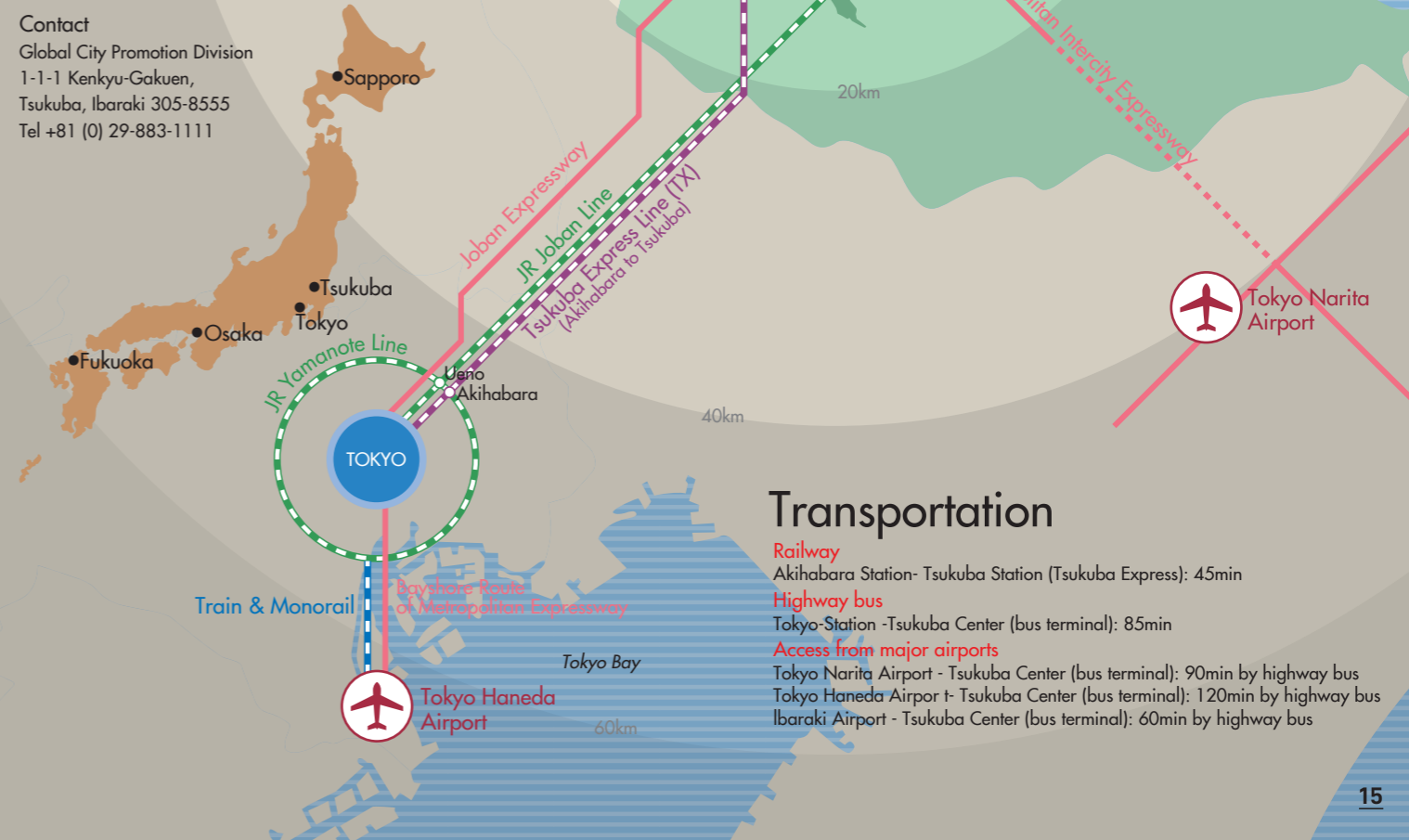
The Center of Tsukuba City

City of Tsukuba

Population: Approx. 254,000 (as of June 2023)
Residents with a foreign nationality: Approx. 12,000 from 148 countries (as of June 2023)
Land area: 283.72 km²

Contact

Global City Promotion Division
1-1-1 Kenkyu-Gakuen,
Tsukuba, Ibaraki 305-8555
Tel +81 (0) 29-883-1111



Transportation

- Railway**
Akihabara Station - Tsukuba Station (Tsukuba Express): 45min
- Highway bus**
Tokyo Station - Tsukuba Center (bus terminal): 85min
- Access from major airports**
Tokyo Narita Airport - Tsukuba Center (bus terminal): 90min by highway bus
Tokyo Haneda Airport - Tsukuba Center (bus terminal): 120min by highway bus
Ibaraki Airport - Tsukuba Center (bus terminal): 60min by highway bus



Issued in October 2023
Printed in Japan