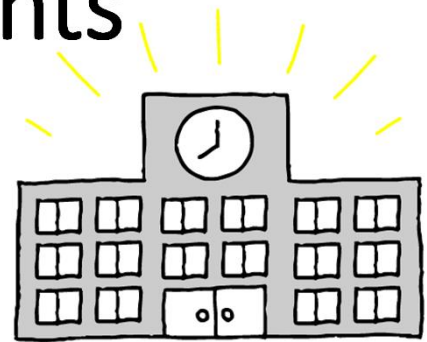
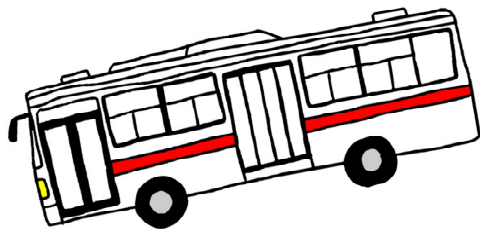
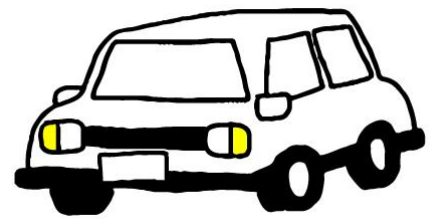


To high school students residing in Tsukuba Provisional translation

# 【Fiscal Year 2026】 Tsukuba City Long-Distance Commute Subsidy for High School Students



**SCHOOL**



You may be eligible for this subsidy if you are a high school student residing in Tsukuba and commuting long distances to school.

## Eligibility

You are eligible if you reside in Tsukuba City and commute at least 6 kilometers one way to your high school. Please see the reverse side for details.

## Amount

30,000JPY per year



Tsukuba City's official website ↑

## Application period

From July 1, 2026 to January 31, 2027

## How to apply

You can apply online. Please visit the official website of Tsukuba City and then click the link to the Ibaraki Denshi Shinsei Todokede Services いばらき電子申請・届出サービス (Ibaraki Electronic Application and Registration Services). You can also find the details on the official website.

## Contact Us

The Planning and Coordination Section, the Educational General Affairs Division,  
Education Bureau of Tsukuba City

Phone: 029-883-1111(switchboard) Email: edc010@city.tsukuba.lg.jp

Address: 1-1-1 Kenkyugakuen Tsukuba, 305-8555 Reception hours: 8:45 am - 4:30 pm  
(Closed on Saturdays, Sundays, national holidays and New Year's holidays)

## Details of the subsidy

You are eligible if you:	<ul style="list-style-type: none"><li>• Are registered in Tsukuba City's Basic Resident Register;</li><li>• Commute at least 6 kilometers one way from home to school, or to an affiliated educational facility if you are enrolled in remote learning courses and go to their facility at least once a week and;</li><li>• Are born on or after April 2, 2008 (or April 2, 2007 if you attend an alternative high school, such as an evening program or remote learning course)</li></ul>
--------------------------	--

Required documents	<ul style="list-style-type: none"><li>• A copy of your student ID or certificate of enrollment issued by your school;</li><li>• A copy of a document showing the bank account details, and;</li><li>• A copy of your resident certificate (<i>juminhyo</i>). Note: This is not required if you consent to the city verifying the information directly.</li></ul>
--------------------	--

### ■ Subsidy amount: 30,000JPY per year

## From application to approval

1. You can apply online. Please visit the official website of Tsukuba City and then click the link to the Ibaraki Denshi Shinsei Todokede Services **いばらき電子申請・届出サービス** (Ibaraki Electronic Application and Registration Services).
  - You can also apply by post or in person. Please download and print the application form from the official website of Tsukuba City, fill it out, and submit it to the City Hall along with the required documents—either by mailing them or bringing them in directly.
2. You will receive either one of the following documents by post from Tsukuba City.
  - Subsidy approval notification letter (**交付決定通知書**) or subsidy disapproval notification letter (**不交付決定通知書**).
3. You will receive the subsidy from the city in the bank account you specified in the application form after receiving a subsidy approval notification letter. (Note: It will take about 2–3 months to process the payment.)

## FAQ

Q. Although the shortest distance from my home to school is less than 6 kilometers one way, the actual route I take is 6 kilometers or more. Am I eligible?

A. You may be eligible if you take a longer commuting route to school because it is safer or for another valid reason, even if the shortest route is less than 6 kilometers. Please also submit a map of your actual commuting route when applying for the subsidy.

Q. Does the subsidy have to be paid into my (eligible high school student's) bank account?

A. No, it does not have to be your account. The subsidy can be transferred into either your account or your parent's/guardian's account.

Q. To apply online using the Ibaraki Electronic Application System, do I need to register myself as a user?

A. No, the user does not have to be you, and it can be your parent or guardian.

However, please fill in your (eligible high school student's) name in the application form.